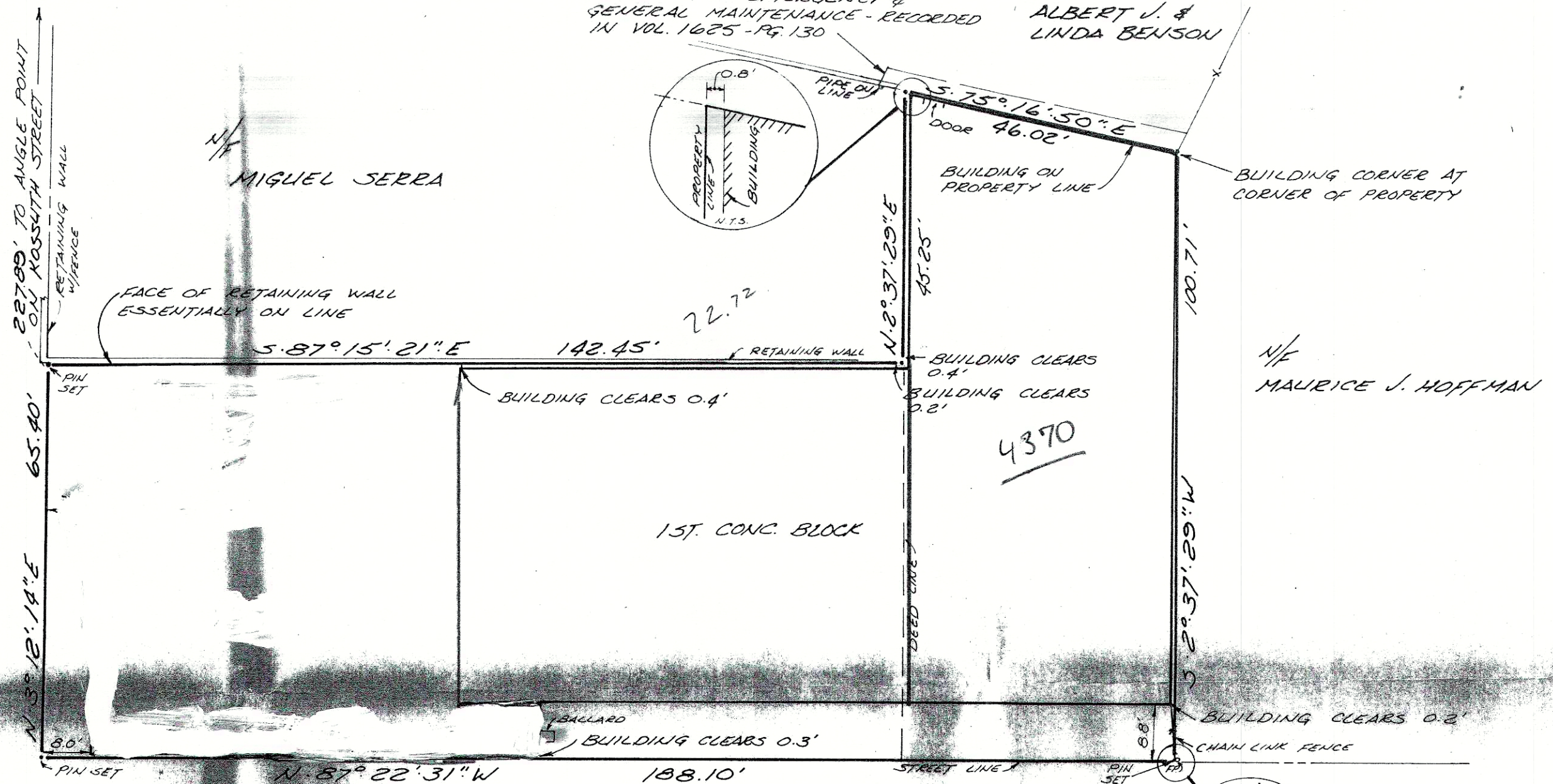
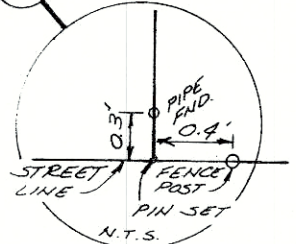


KOSSUTH STREET



MAP REFERENCE

MAP FOR ROBERT J. BEACH
 SCALE: 1" = 30' - DATED: MAY 8, 1920 - BY FRANK B. JAYNES, INC. - ENGINEERS & SURVEYORS.



SILLIMAN PLACE

AREA: 14,065 Sq. Ft.
 0.3229 Ac.

PLOT PLAN
 36 SILLIMAN PLACE
 BRIDGEPORT, CONNECTICUT
 Scale: 1" = 20' Date: Feb. 24, 1986

PREPARED FOR
PETER DiNARDO ENTERPRISES
KVA J & D KASPER & ASSOCIATES
 Engineers, Surveyors, Planners
 Bridgeport, Connecticut

I hereby certify that this map and survey were prepared in accordance with the standards of Accuracy of a Class A-2 survey as defined in the Code of Practice for Standards of Accuracy of Surveys and Maps adopted December 10, 1975 as amended by the Connecticut Association of Land Surveyors, Inc.

Philip L. Ford